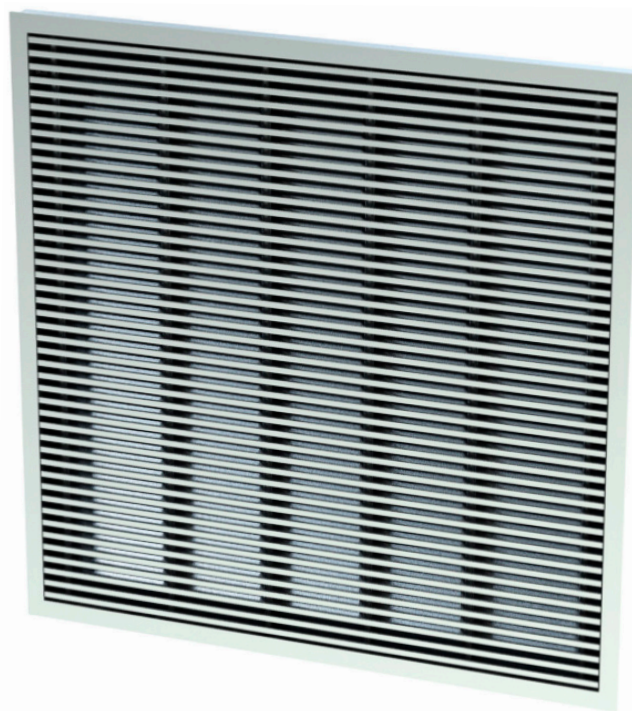
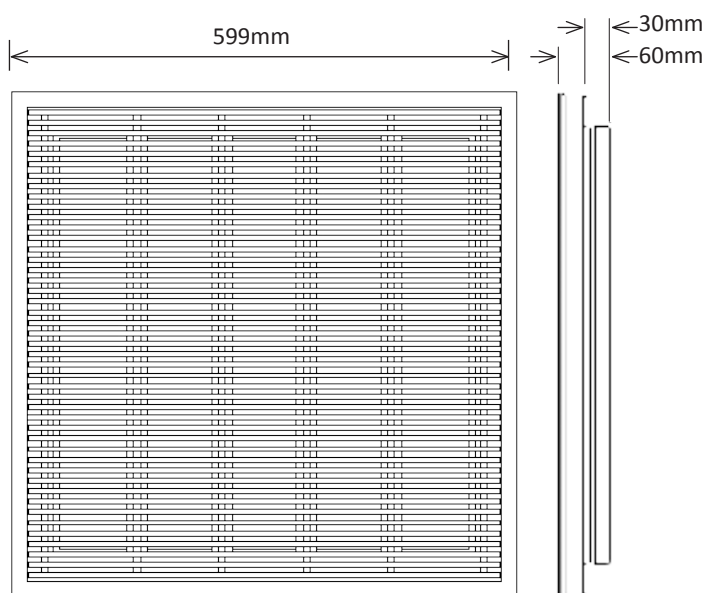


# BAG600BX Aluminium Floor Grille CFLG-C

## Extra Heavy Grade to BSEN 13264: 2001

The BAG600BX Extra Heavy Grade Aluminium Floor Grilles has been designed from the outset to suit the majority of raised access floor systems. The CFLG-C grilles are exceptionally slim, aesthetically pleasing and feature rich for the most exacting clients and suitable for the Extra Heavy Grade floors. A Tile depth of just 30mm with an overall depth of just 60mm.

- Extruded Aluminium Frame and 6mm Wide Blades.
- Frame - 18mm Wide Flange - Overall Depth 60mm.
- Weight per Unit - 11.2kg or 12.6kg with Dampers.
- Free Area - 39%



## Finish

Permaflor can supply you a standard Type C computer room floor grille, or a customised unit made to your exact specifications. Other Sizes and finishes are available. Please contact Sales for more information.

Opposed blade damper – Aluminium OBD, operated via key/screwdriver, access possible through blades. Please note that this is not a shut off damper and only enables balancing of the air system.

Feet – Feet of any size can be fitted to computer room floor grilles. These enable the grille to be mounted flush to whatever floor tile is being fitted around it.



Permaflor is the manufacturing division of Bathgate Flooring

# BAG600BX Aluminium Floor Grille CFLG-C

## Extra Heavy Grade to BSEN 13264: 2001

### Opposed Blade Dampers

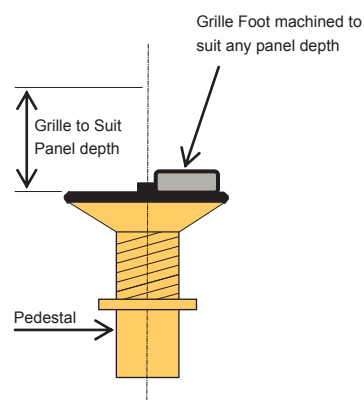


Mounted to the underside of the grille, opposed blade dampers allow the airflow to be trimmed to suit the location.

Adjustable through the grille face using a flat head screwdriver.

Opposed Blade Dampers are supplied in mill aluminium finish regardless of the grille finish

### Grille Position on Pedestal



### Grille Depth



The depth of the raised floor panels where the grille is to be placed must be stated before ordering the grille.

Additional spacers are fitted under each corner to raise the grille face to the required height.

Minimum Depth CFLG-C  
= 30mm

### Installation

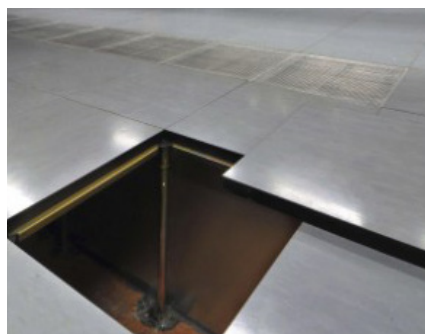
The Permaflor Aluminium Grilles are designed to be laid into a prepared Raised Access Floor, therefore installation simply involves laying the grille into position.

The Grille has round feet that locate between the pedestal cap lugs.

### Spacing Pips



As the grilles are  $599\text{mm}^2 \pm 0.5\text{mm}$ , when laying grilles in a row for a cold aisle, 8 special pips can be formed 80mm in from each corner on CFLG-C grilles. These will give the grilles an overall dimension of  $600\text{mm}^2 +0.0 - 0.2\text{mm}$  to match in with the panel. These can not be seen from the face of the grille.

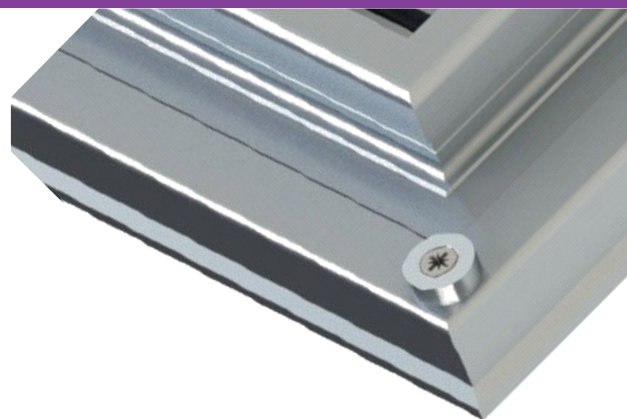


# BAG600BX Aluminium Floor Grille CFLG-C

## Extra Heavy Grade to BSEN 13264: 2001

### Finishes

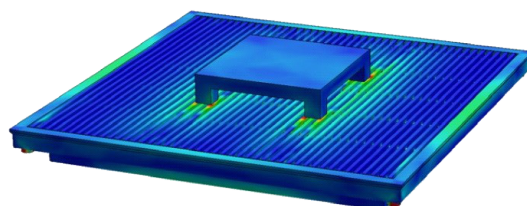
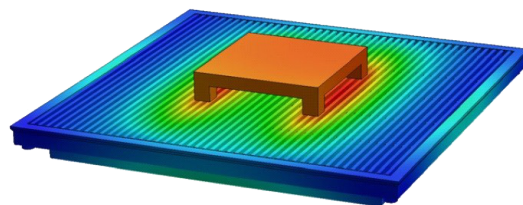
- The standard finish is Linished (brushed) aluminium Nylon Costed (Black)
- Polyester Powder Coating to any RAL or BS Colour



### Product Design

The new Extra Heavy Grade CFLG-C Grille have entirely been developed using FEA software. Building a virtual representation of the grille and the modelling in the real world test enabled the testing of hundreds of design iterations for the frame, blade and mullion extrusions before manufacture.

The designs are fine tuned to give not only the required strength, but not be over-engineered as to increase costs.



### Product Testing

Series CFLG-C Computer Room Grilles have been tested against:  
**BSEN 13264:2001**

Ventilation for Buildings—Floor mounted air terminal devices

#### Extra Heavy Grade Achieved

**Test Report No:**  
**F2536/7196**

The testing was carried out in February and March 2014 by Building Testing Limited in Surrey, England

Copies of the test report are available on request.



Testing & Inspection